



Deposited on loan
by order of the Trustees of
THE HISPANIC SOCIETY OF AMERICA

100

100

100

100

100

100



Index of Coin Sales.

1843.

1	Miscellaneous.		16 Feby.	not
2	Henry Ashlin.	Antiquities & Monuments	1 March.	"
3	Jno Trotter Brockett.		5 April.	not
4	_____ Books.		24 June.	not
5	Dr J Milles, and J. Raincock.		31 May.	not
6	J. Raincock, and J. Blick. Books		7 June.	not
7	Rev. Francis Blick.		30 June.	not
8	Robert Boyne.		19 July.	not
9	William Mark.		24 Nov.	not

1844.

10	Duke of Devonshire.	Greek & Roman.	18 March.	not
11	_____	English.	26 March.	not
12	Miscellaneous.		3 May.	not
13	Greek and Roman.		16 Nov.	not
14	Mr Coxon.		9 Dec.	not

CATALOGUE

OF

A VALUABLE COLLECTION OF

ROMAN COINS,

ANGLO-SAXON & ENGLISH SILVER,

SCOTCH, IRISH, AND ANGLO-GALLIC

COINS IN SILVER,

INCLUDING

MANY SPECIMENS IN FINE PRESERVATION AND OF GREAT
RARITY,

ENGLISH AND FOREIGN MEDALS,

IN SILVER AND BRONZE,

CABINETS, &c.

THE PROPERTY OF A GENTLEMAN,

GIVING UP COLLECTING.

M. Coxon

WHICH WILL BE SOLD BY AUCTION,

BY

S. LEIGH SOTHEBY & CO.

AUCTIONEERS OF LITERARY PROPERTY AND WORKS ILLUSTRATIVE OF THE FINE ART
AT THEIR ROOMS, 3, WELLINGTON STREET, STRAND,

On MONDAY, the 9th of DECEMBER, 1844,

And following Day, at ONE o'Clock precisely.

To be Viewed on the FRIDAY and SATURDAY previous.

Printed by J. DAVY & SONS, Queen Street, King Street, Long Acre.

Printed & Sold by Peter Whelan 22 Pall Mall

CONDITIONS OF SALE.

- I. The highest bidder to be the buyer; and if any dispute arise between two or more bidders; the lot so disputed shall be immediately put up again.
- II. No person to advance less than 1s. ; above Five Pounds 2s. 6d.; and so on in proportion.
- III. The Purchasers to give in their Names and Places of Abode, and to pay down 5s. in the Pound, if required, in part of payment of the Purchase-money; in default of which, the Lot or Lots purchased to be immediately put up again and re-sold.
- IV.—The Sale of any lot is not to be set aside on account of any error in the enumeration of the numbers stated, or errors of description.
- V. The Lots to be taken away at the Buyer's Expence, immediately after the Conclusion of the Sale; in default of which, S. Leigh Sotheby & Co. will not hold themselves responsible if lost, stolen damaged or otherwise destroyed, but they will be left at the sole risk of the Purchaser. If at the expiration of Two Days after the conclusion of the Sale, the Lots are not cleared or paid for, they will then be catalogued for immediate sale, and the expence, the same as if re-sold, will be added to the amount at which they were bought. S. Leigh Sotheby & Co. will have the option of re-selling the Lots uncleared either by public or private sale, without any notice being given to the defaulter.
- VI. Upon failure of complying with the above conditions, the money required or deposited in part of payment shall be forfeited; and *if any loss is sustained in the re-selling of such lots as are not cleared or paid for, all charges on such re-sale shall be made good by the defaulter at this sale.*

Gentlemen who cannot attend the Sale, may have their Commissions faithfully executed by their humble Servants,

S. LEIGH SOTHEBY & JOHN WILKINSON,
Wellington Street, Strand.

CATALOGUE.

FIRST DAY'S SALE.

The References in this Catalogue are to the following works:—*Hk.*, Hawkins' Silver Coinage, 1841.—*Sn.*, Snelling.—*Rd.*, Ruding.—Ainslie.

LOT

<i>Whelan</i>	1 Roman Large Brass, Paduans, and others	51	"	18	"
<i>Webster</i>	2 Consular Copper of Aburia, Afrania, Annia, Asinia, Betelina, Cassia, Cornelia, Livia, Marcia, Rubillia, &c.	40	/	4	"
<i>Hoffman</i>	3 Roman Third Brass, and various Emperors and Empresses struck at Alexandria, <i>some fine</i>	65	/	2	"

ROMAN SECOND BRASS.

<i>Webster</i>	4 Julius, Augustus, Livia, Agrippa, Tiberius, Germanicus, Nero, Claudius, Galba, Vitellius, Vespasian, Hadrian, &c.	19	"	16	"
<i>(D)</i>	5 Augustus, Livia, Tiberius, Germanicus, Caligula, Drusus, Nero, Galba, Vespasian, Hadrian, Sabina, Verus, &c.	20	"	14	"
<i>(D)</i>	6 Augustus, Julia, Nero, Hadrian, Ant. Pius, Faustina sen., M. Aurelius, Faustina jun., Commodus, Lucilla, &c.	24	/	5	"
<i>Hoffman</i>	7 Nero, Antoninus Pius, Faustina, Commodus, Julia Domna, &c.	20	"	15	"
<i>Whelan</i>	8 Nero, M. Aurelius, Julia Domna, 2; Caracalla, <i>all fine</i>	5	/	1	"
<i>Burton</i>	8* Drusus; Tiberius, R Caduceus; Nero and Drusus; Vespasian, R JVDAEA. CAPTA.; Commodus, R a Club; Caracalla; Gordian III., <i>all well preserved</i>	7	/	2	"
<i>Cart</i>	9 Augustus, Julia, Tiberius, Germanicus, Nero, Drusus, Hadrian, Ant. Pius, and others	27	"	12	"

ROMAN FIRST BRASS.

<i>Saylor</i>	10 Pompey, 1; Augustus, 1; Claudius, 1; Julia, 1; Drusus jun., 1; Agrippina, 1, <i>all in good condition</i>	6	/	18	"
<i>(D)</i>	11 Pompey, 1; Augustus, 1; Julia, 1; Agrippina, 1; Caligula, 1; Claudius, 1; Nero, 1; Galba, 1, <i>all in good condition</i>	8	2	1	"
<i>Burton</i>	12 Titus, Vespasian, Nerva, Trajan, and Hadrian, <i>different reverses</i>	16	"	11	"
<i>Saylor</i>	12* Julius, 2, R Augustus and Wreath; Nero, 2, R DECVRGIO.; Domitian, 2, R LVD. SÆC. and GERMANIA CAPTA.	6	"	18	"

" 8 "	13	Augustus, 1; Julia, 1; Caligula, 2; Claudius, 1; Nero, 2; Galba, 1; Vespasian, 1; Hadrian, 1; Ant. Pius, 4	14	Burton
" 19 "	14	Galba, 1; Vespasian, R IVDAEA. CAPTA.; Titus, 1; Hadrian, 1; Sabina, 1; Ælius, 1; Ant. Pius, 2, <i>in good condition</i>	8	Shelton
" 11 "	15	Vespasian, 1; Ælius, 1; Ant. Pius, 1; Faustina sen., 1; Aurelius, 1; Faustina jun., 1; Verus, 1; Commodus, R VIC. BRIT.	8	Cuvelton
" 6 "	16	Ant. Pius, 5; Faustina sen., 1; Aurelius, 4; Faustina jun., 2; Commodus, 2	14	Shelton
" 6 "	17	Ant. Pius, 7; Faustina sen., 2, Aurelius, 4; Faustina jun., 2; Verus, 1	16	Do
1 1 "	18	Commodus, 2, one VICT. BRIT.; Lucilla, 2; Crispina, 1; Didius Julian, 1; Clodius Albinus, 1; Severus, 1	8	Webster
" 11 "	18*	Pertinax, R PROVIDENTIA DEORVM.; Didia Clara, <i>both very rare</i> ; Trajan Decius, a Medallion	3	Shelton
" 6 "	19	Lucilla; Julian; Severus; Julia Domna; Caracalla, R VICTORIAE. BRITANNICAE.; Geta, R VICT. BRIT. &c. <i>tooled</i> ; Diadumenian	7	Do
1 3 "	20	Lucilla, 1; Julian, 1; Severus, 1; Geta, 1; Alexander, 4; Julia Mamæa, 1; Maximinus, 2; Maximus, 1, &c.	16	Webster
1 1 "	21	Elagabalus. 1; Alexander, 2; Julia Mamæa, 1; Maximinus, 1; Maximus, 2; Balbinus, 1; Gordian, 2; Pupienus, 2	12	Cuvelton
" 10 "	22	Gordian <i>Africanus</i> I, and II? and Balbinus, <i>fine</i>	3	Do
" 10 "	23	Pupienus, 1; Gordian III, 2; Philip sen. 1; Otacilla, 1; Philip jun., 1	6	Burton
" 8 "	24	Pupienus, 1; Philip sen., 3; Otacilla, 1; Philip jun., 3; Trajanus Decius, 1; Etruscilla, 1; Herennius, 1; Trebonianus Gallus	13	Cuvelton
1 10 "	25	Hostilianus, 1; Treb. Gallus, 2; Volusian, 3; Valerian, 2; Salo- nina, 1; Paulina, 1; Postumus, 1	11	Hobbs
" 3 "	26	Ant. Pius, Faustina, Severus, and Paulina, <i>all false</i> ; and others	10	Cant
1 10 "	27	Roman As, Head of Janus, R Prow; Semis, Head of Jupiter, R Prow; Triens, Head of Pallas, R Prow	3	Cuvelton
" 10 "	27*	Quadrans, Head of Hercules, R Prow; Sextans, Shell, R Cadu- ceus; Uncia, 2, and five of the modern As	10	Do

ROMAN IMPERIAL SILVER.

2 6 "	28	Pompey, Julius Cæsar, Augustus, Tiberius, Claudius, Nero, Galba, Otho, Vespasian, Titus, Vitellius, Domitian, Nerva, Trajan, and Hadrian, one of each Emperor	14	Shelton
-------	----	---	----	---------

Whelan	29	Julius Cæsar, 2; Augustus, 3; Tiberius, 1; Nero, 1; Galba, 1; Vespasian, 4; Titus, 1; Vitellius, 1; Domitian, 3; Nerva, 1; Trajan, 2; Hadrian, 3	23	" 17 "
Cureton	30	Drusus, R DE. GERMANIS. on the front of a triumphal arch; Claudius, R DE. BRITANNI. on the front of a triumphal arch, rare	2	1 11 "
D ^o	31	Agrippina sen., her head, R the Head of Caligula, <i>fine and rare</i>	1	2 " "
Jorey	32	Agrippina jun., her head, R the Head of Claudius, <i>rare</i>	1	1 16 "
Curt	33	Agrippina jun., R Quadriga of elephants, <i>plated</i> ; Domitia, R Peacock standing, <i>rare</i>	2	" 12 "
Jorey	34	Julius Cæsar, R M. Antony; Vespasian, R Heads of Titus and Domitian, <i>rare</i>	2	1 3 "
Curt	35	M. Agrippa, his Head, R the Head of Augustus, <i>fine and very rare</i>	1	5 10 "
Webster	36	Lepidus, his Head, R the Head of Octavius, <i>rare</i>	1	1 17 "
Curt	37	Julius Cæsar, 1; Augustus, 5; Nero, 1; Galba, 1; Vespasian, 5, one IVDAEA.; Titus, 1; Vitellius, 2; Domitian, 3; Nerva, 1	20	" 17 "
Whelan	38	Trajan, Hadrian, Sabina, L. Ælius, Ant. Pius, Faustina sen., M. Aurelius, Faustina jun., Verus, Commodus, Lucilla, Crispina, one of each, <i>some fine</i>	12	1 8 "
Hoffmann	39	Trajan, Hadrian, Sabina, L. Ælius, Ant. Pius, Faustina sen., M. Aurelius, Faustina jun., Commodus, Pertinax, Severus, Julia Domna, one of each	12	1 1 "
Webster	40	Trajan, 5; Hadrian, 3; Ant. Pius, 5; Faustina sen., 2; M. Aurelius, 2; Faustina jun., 3	20	" 15 "
Curt	41	Didia Clara, R HILLAS. PVBLICA., Female standing with a long branch, <i>in good condition, and rare</i>	1	2 10 "
Hoffman	42	Pertinax, Albinus, Severus, Julia Domna, Caracalla, Plautilla, Geta, Macrinus, and Diadumenian, <i>rare</i>	9	1 12 "
Cureton	43	Severus, 3; Julia Domna, 2; Caracalla, 5; Geta, 2; Julia Soæmias, 1; Alexander, 3; Julia Mamæa, 1; Maximinus, 1; Maximus, 1; Gordian, 1	20	" 13 "
Sindal	44	Elagabalus, Julia Paula, Aquilia Severa, Julia Soæmias, Julia Mæsia, Alexander Orbiana, Julia Mamæa, Maximus, Maximus, Balbinus	13	2 10 "
D ^o	45	Gordian III, Philip sen. and jun., Trajanus Decius, Etruscilla, Hostilianus, Treb. Gallus, Volusian, Æmilian, Valerian, Gallienus, Salonina, and Postumus, one of each	13	1 " "
Webster	46	Gordian III, 5; Philip sen. 3; Philip jun. 2; Decius, 1; Etruscilla, 1; Gallus, 2, &c.	17	" 9 "

" 6 "	47	Volusian, 1; Æmilian, 2; Valerian, 7; Gallienus, 1; Salonina, 1; Postumus, 4, &c.	18	<i>Curt</i>
" 15 "	48	False Roman Silver. Augustus, Matidia, & Plotina; Claudius, & Germanicus; Antony, & Cleopatra; Agrippa, &c.		<i>Curt</i>

ROMAN CONSULAR SILVER.

" 14 "	49	Aburia, Accoleia, Acilia, Ælia, Æmilia, Afrania, Annia, Antestia, Antia, Antonia, Legions 6, &c.	20	<i>Hoffman</i>
/ 6 "	50	Antonia, & Cleopatra; & Augustus; & ANTONIVS. AVG. IMP. III.; Head of the Sun, & Priest, <i>fine</i>	4	<i>Tindall</i>
" 14 "	51	Antonia, 2; Aquillia; Aufidia, <i>very rare</i>	4	<i>Whelan</i>
" 17 "	52	Aurelia, 2; Bæbia, 1; Cæcilia, 2; Cæsia, 1; Calidia, 1; Calpurnia, 4; Caninia, 1; Carisia, 3, <i>finè, all different</i>	16	<i>Do</i>
/ " "	53	Cassia, 4; Cepia, 1; Claudia, 3; Cloulia, 2; Coelia, 1; Considia, 1; Coponia, 1; Cordia, 3	16	<i>Tindall</i>
/ 10 "	54	Antonia, Coponia, Vargunteia, Juba, and a quinarius, <i>fine</i>	5	<i>Do</i>
/ 2 "	55	Cornelia, 5; Cossutia, 1; Cupiennia, 1; Curiatia, 1; Curtia, 1; Didia, 1; Domitia, 3; Durmia, 1, <i>rare</i>	14	<i>Whelan</i>
" 19 "	56	Egnatia, 1; Fabia, 2; Fannia, 2; Farsuleia, 1; Flaminia, 1, <i>rare</i> ; Flavia, 1; Fonteia, 4	12	<i>Do</i>
" 14 "	57	Fufia, 1; Furia, 3; Gellia, 1; Herennia, 1; Hosidia, 1; Hostilia, 3; Julia, 4	14	<i>Taylor</i>
" 16 "	58	Julia, 3; Junia, 2; Licinia, 1; Livinia, 1; Lollia, 1; Lucilla, 1; Lucretia, 2; Lutatia, 1; Mænia, 1	13	<i>Curt</i>
" 17 "	59	Julia, 2; Junia, 3; Licinia, 1; Maiana, 1; Manlia, 1, Marcia, 7	15	<i>Whelan</i>
/ 5 "	60	Crepusia, 1; Domitia, 1; Egnatuleia, 1; Eppia, 1; Junia, 2; Mamilia, 1, <i>all fine</i>	7	<i>Tindall</i>
" 12 "	61	Maria, 1; Memmia, 1; Minutia, 2; Mucia, 1; Mussidia, 2; Næva, 1; Norbiana, 1; Opemia, 1; Papia, 1; Papiria, 1	12	<i>Whelan</i>
/ 9 "	62	Ogulnia, head laureated, below, a thunderbolt, & Jupiter in a quadriga, above, c, below, OCVL., in the exergue, CAR. VER., <i>rare</i>	1	<i>Brunnel</i>
/ 3 "	63	Numonia, & warrior attacking an entrenchment defended by two others, <i>poor, but very rare</i>	1	<i>Curt</i>
" 11 "	64	Petillia, 1; Petronia, 1; Penaria, 1; Plætoria, 3; Plantia, 1; Plautia, 4; Poblícia, 1	12	<i>Hoffman</i>
" 15 "	65	Pompeia, 2; Porcia, 3; Postumia, 1; Procilia, 1; Quinctia, 1; Renia, 1; Rubria, 2; Rustia, 1; Rutilia, 1	13	<i>Whelan</i>
" 12 "	66	Nævia, 1; Nerva, 1; Plautia, 1; Pomponia, 1; Poreia, 2	6	<i>Curt</i>

<i>Whelan</i>	67	Salvia, 1; Sanquinia, 1; Satriena, 1; Saufia, 1; Scribonia, 1; Sempronia, 1; Sentia, 1; Sepullia, 2; Sergia, 1; Servilia, 1; Sestia, 1, a Quinarius	12	1	2	"
<i>Curt</i>	68	Sulpicia, 1; Terentia, 2; Thoria, 1; Titia, 2; Tituria, 2; Tullia, 1; Valeria, 2	11	"	12	"
<i>Whelan</i>	69	Vergilia, 1; Vettia, 1; Veturia, 1; Vibia, 4; Volteia, 2, &c.	15	1	17	"
<i>Cureton</i>	70	Uncertain, Double Denarius, youthful janiform head, R Jupiter in a quadriga, conducted by Victory, <i>fine</i>	1	"	8	"

ANGLO-SAXON AND ENGLISH SILVER.

<i>Cureton</i>	71	St. Eadmund, VVINER. MONETA.; and another, <i>broken</i>	2	0	6	0
<i>Curt</i>	72	Ethelvulf, OSMVND. MONETA., <i>Hk.</i> pl. XII, No. 166, <i>fine and rare</i>	1	3	"	"
<i>Sink</i>	73	Æthelbearht, MANNINE. MONETA., <i>Hk.</i> pl. XIII, No. 169, <i>rare</i>	1	1	14	"
<i>Cureton</i>	74	Æthelbearht, ÆTHELRED. MONETA., <i>Hk.</i> pl. XIII, No. 169, <i>rare</i>	1	"	16	"
<i>Sindae</i>	75	Æthelred I, LIABINC. MONETA., <i>Hk.</i> pl. XIII, No. 172, <i>rare</i>	1	3	3	"
<i>Do</i>	76	Alfred, his head, R the monogram of London, <i>Hk.</i> pl. XIII, No. 174, <i>very rare</i>	1	"	10	"
<i>Cureton</i>	77	Eadweard, SELAF. MONE.. <i>Rd.</i> pl. 16, No. 7; Alfred, CVDBER. MT., <i>Rd.</i> pl. 16, No. 13	2	1	7	"
<i>Do</i>	78	Alfred, BIORNRED., <i>Rd.</i> pl. 16, No. 12; Æthelstan, ABBA. MOIN. LEGECF., <i>Rd.</i> pl. 18, No. 25	2	1	7	"
<i>Beyne</i>	79	Alfred, DVDIO. MON., rather differing from <i>Rd.</i> pl. 15, No. 11; Eadmund, EADVVEARD. M., different to any in <i>Rd.</i> <i>fine</i>	2	3	2	"
<i>Sink</i>	80	Eadred, THVRMOD. M., <i>Rd.</i> pl. 19, No. 5, <i>fine</i>	1	1	1	"
<i>Curt</i>	81	Eadwig, HERIGER. MO., <i>Rd.</i> pl. 20, No. 4	1	1	5	"
<i>Sink</i>	82	Eadgar, FREOTHRIC. MON., <i>Rd.</i> pl. 21, No. 21	1	"	19	"
<i>Cureton</i>	83	Eadgar, FASTOLF. MON., and HEROLF. MONET., <i>Rd.</i> pl. 21, No. 20	2	1	3	"
<i>Whelan</i>	84	Eadward II, ESCMAN. MO. STANF., <i>Hk.</i> pl. xv, No. 202; Ethelred II., similar to <i>Hk.</i> pl. xvi, No. 204 and 207	3	1	19	"
<i>Sink</i>	85	Eadward II, FVLFMER. MO. MERT., <i>Rd.</i> pl. 21, No. 1; Ethelred II., similar to <i>Hk.</i> pl. xvi, No. 204 and 207	3	1	15	"
<i>Cureton</i>	86	Ethelred II, PVLFRIC. MOHEORT.? <i>Hk.</i> pl. xvi, No. 203; and two, <i>Hk.</i> pl. xvi. No. 204 and 207	3	1	1	"
<i>Taylor</i>	87	Ethelred II, LEOFSVN. ON. PINTCES., <i>Hk.</i> pl. xvi, No. 205; another, similar to No. 206	2	"	13	"
<i>Shepherd</i>	88	Cnute, 2, similar to <i>Hk.</i> pl. xvi, No. 212 and 213; Edward the Confessor, 3	4	1	"	"
<i>Whelan</i>	89	Harold I, struck at Thetford, similar to <i>Hk.</i> pl. xvi, No. 214, <i>fine and rare</i>	1	4	8	"
<i>Sink</i>	90	Edward the Confessor, sovereign type, EGRINE. ON. FIGR. <i>fine</i>	1	1	16	"

1	16	"	91 Edward the Confessor, 3; Harold, 1, PAX., <i>fine</i>	4	Taylor
"	9	"	92 Charlemagne, 1; Cunetti, 1; Metullo, 1, from the Cuedale fine; and one of the early coins of Strasburgh	4	Curt
"	19	"	93 William the Conqueror, Pax types, various mintages	13	Underhill
"	17	"	94 William the Conqueror, Pax types, various mintages	13	Q ^o
"	16	"	95 William the Conqueror, Pax types, various mintages	13	Q ^o
1	4	"	95* William the Conqueror, Pax types	13	
		"	* * * In the four preceding lots there are 33 different mintages; amongst them Bath, Colchester, Ipswich, &c.		Whelan
"	12	"	96 William the Conqueror, CILD. ON. BEDEPIND., <i>Hk.</i> pl. XVIII, No. 233, <i>rare and unpublished</i>	1	Q ^o
1	1	"	97 William the Conqueror, ELFSI. ON. LEOCE., <i>Hk.</i> pl. XVIII, No. 234, <i>fine and rare</i>	1	Q ^o
1	19	"	98 William the Conqueror, canopy type, IVCHTPI. ON. NEAPI., <i>Hk.</i> pl. XVIII, No. 236, <i>rare</i>	1	Shink
1	11	"	99 William the Conqueror, with two sceptres, GODWIC. ON. LVND., <i>Hk.</i> pl. XVIII, No. 237, <i>rare</i>	1	Q ^o
"	15	"	100 William the Conqueror, two sceptres, LEOFOLD. ON. PINC., <i>Hk.</i> pl. XVIII, No. 237, <i>rare</i>	1	Taylor
1	15	"	101 William II, ANDKBOD. ON. CST., <i>Hk.</i> pl. XVIII, No. 238, <i>rare</i>	1	Shink
1	10	"	102 William II, with two stars, similar to <i>Hk.</i> pl. XIX, No. 250, <i>rare</i>	1	Webster
"	12	"	103 Henry I, ALBRIEVS. ON. TAM., <i>Hk.</i> pl. XX, No. 255, <i>rare</i>	1	Hall
"	15	"	104 Stephen, FREN. ON., <i>Hk.</i> pl. XXI, No. 270, <i>rare</i>	1	Night
"	9	"	105 Henry II, 2, <i>Hk.</i> pl. XXII, No. 285 and 286; Henry III, 2, one REX. TERCI.	4	Burton
"	9	"	106 Henry II, similar to the last; Henry III, 2, similar to the last	4	Q ^o
"	7	"	107 Henry II, similar to the last; Henry III, 2, similar to the last	4	Whelan
"	19	"	108 Henry II, 1; Henry III, 6, one reads, REX. ANG., <i>very scarce</i> ; Edward I, Pennies, 2; Halfpence, 3; Bristol Farthing, <i>rare</i>	14	Cureton
1	7	"	109 Edward I and II, Pennies, various mintages, 33; Halfpence, 4	37	Webster
1	1	"	110 Edward III, Groats, 3; Half Groats, 2, London and York; Penny, Halfpenny, and Farthing	8	Shink
2	17	"	111 Richard II, Groat, <i>poor</i> ; Half Groat, <i>well preserved and</i> <i>rare</i> , Penny, and 3 Half-pence, <i>fine</i>	6	Whelan
1	15	"	112 Henry IV, V, VI, Groats, 3, one the light Groat of Henry VI; Pence, Halfpence, and Farthing	14	Taylor
"	5	"	113 Henry IV, V, VI, Halfpenny, reads, SIVITAS. LONDON.; Henry VII, Groat, <i>m. m.</i> shell, roses after the letters, <i>fine</i>	2	Cureton
"	18	"	114 Edward IV, Groats, 8, struck at Bristol, Coventry, London, Norwich, and York; Half Groats, 3; Penny, 1	12	Q ^o

<i>Spink</i>	115	Richard III, Groats, boar's head, <i>m.m., fine,</i>	1	/	4	"
<i>Cureton</i>	115*	Richard III, Groat, struck at York, <i>well preserved and rare</i>	1	/	2	"
<i>Lindal</i>	116	Richard III, Groats, boar's head, <i>m.m.,</i> and one, rose, <i>m.m.</i>	2	/	5	"
<i>Cureton</i>	116*	Richard III, Penny, struck at Durham, <i>s. on the breast, well preserved and extremely rare</i>	1	2	4	"
<i>Spink</i>	117	Henry VII, Groats, and Half Groats; Henry VIII, Groats, Half Groats, and Penny	11	"	16	"
<i>Burton</i>	118	Henry VII, Groats, and Half Groats; Henry VIII, Groats, Half Groat, and Penny, including a set of Wolsey's	11	/	3	"
<i>Spink</i>	119	Henry VIII, Shilling, Groat, Half Groat, Penny	4	/	2	"
<i>Cureton</i>	119*	Henry VIII, Groat, and 2 Halfpence, struck at Canterbury and London, <i>rare</i>	3	"	7	"
<i>Underhill</i>	120	Edward VI, Crown, Half Crown, 1551, <i>m.m.Y;</i> Shilling	3	2	1	"
<i>Lindal</i>	120*	Edward VI., Shilling, side face, reads TIMOR. DOMINI. FONS. VITE. M. D. L., and base Penny, <i>both in good condition</i>	2	/	"	"
<i>Underhill</i>	121	Edward VI, Crown, 1553, <i>m.m. tun;</i> Shillings, 2, front, and side face; Sixpence, and Threepence	5	/	11	"
<i>Spink</i>	122	Philip and Mary, Shillings, 2, date 1554, and without the date; Sixpences, 2, 1554, 1557; Groats, 2; and Penny	7	/	12	"
<i>Cureton</i>	123	Elizabeth, Crown, <i>m.m. 2;</i> Half Crown, <i>m.m. 1;</i> <i>both well preserved</i>	2	3	3	"
<i>Burton</i>	124	Elizabeth, Crown, <i>m.m. 1;</i> Shillings, 2; Sixpence, Groat, Half Groat, Penny, and Halfpenny	9	2	"	"
<i>Cureton</i>	125	Elizabeth, Shillings, 5; Sixpences, 5; Half Groat, and various small, including a Three-halfpenny and Three-farthing Piece	20	/	8	"
<i>Shepherd</i>	126	James I, Crown, Half Crown, and Shilling, with feathers over the arms, <i>all well preserved</i>	3	3	14	"
<i>Melan</i>	127	James I, Crown, 1; Shillings, 2; Sixpence, 1; Twopence, 1; Penny, and Halfpenny	7	/	1	"
<i>Cureton</i>	128	James I, Shillings, 2; Sixpence, 1; Twopence, 1; Penny; Charles I, Crown	6	2	5	"
<i>Dunlop</i>	129	Charles I, Twenty Shilling Piece, 1642, arms under the horse	1	2	5	"
<i>Taylor</i>	130	Charles I, Ten Shilling Piece, 1643, arms under the horse, <i>fine</i>	1	3	4	"
<i>Lindal</i>	131	Charles I, Crown, Half Crown, Shilling, and Sixpence, Oxford Mint, <i>all very well preserved</i>	4	3	"	"
<i>Melan</i>	132	Charles I, Crown, 1644; Shilling, 1645, <i>both struck at Exeter, and very well preserved</i>	2	/	17	"
<i>Burton</i>	132*	Charles I, Half Crown, struck at Bristol; Sixpence, Groats, 2, Threepence and Twopence, Aberystwith; Threepence, Twopence, and 2 Pennies, 1 Briot's	10	/	10	"

1	1	"	133 Charles I, Half Crown, EBOR. under the horse; Briot's Shilling, and Sixpence; and a Pattern for Twopence	4	Curt
1	6	"	134 Charles I, Shillings, 7; Sixpences, 2; Fourpences, 2; Threepences, 2; Twopences, 2	15	Webster Curt
1	10	"	135 <i>Siege Pieces</i> : Newark xxx, XII, IX, VI	4	Webster
1	12	"	136 <i>Siege Pieces</i> : Ormond Crown, Half Crown, Shilling, Sixpence, Fourpence, and Threepence	6	
3	1	"	137 <i>Siege Pieces</i> : Carlisle Shilling; <i>rare</i>	1	Curt
1	1	"	137* New England Shilling, Sixpence, and Threepence	3	Curt
2	3	"	138 <i>Siege Piece</i> : Pontefract Shilling, <i>Rd. pl. xxix, No. 10, fine and rare</i>	1	Spink
"	16	"	139 <i>Siege Piece</i> : Pontefract Shilling, <i>Rd. pl. xxix, No. 12, rare</i>	1	Hall
1	8	"	140 Lord Baltimore, Shilling; Touch Pieces of James II, gold; Charles III, and James IX, <i>silver</i>	4	Curt

£ 190 " 17 "

SECOND DAY'S SALE.

LOT

-	2	.	141 Casts of various rare Medals	10	Hoffman
.	4	.	142 General Washington, 2; Duke of Cumberland; Charles II, and his Queen; Henry IX, and others	20	Medal
.	8	.	142* Irish Copper Coins, including a number of the Gun Money of James II.	42	Hoffman
.	6	.	143 English, Scotch, Isle of Man, Rosa Americana, &c.	36	Burton
1	10	.	144 Fine Cast of the Oxford Crown; three French Patterns; Twopenny Piece, <i>fine</i> ; Copper Coin of the Ionian Isles, <i>fine</i> ; and two impressions of Wyon's Coin of Maria II. of Portugal	8	Curt
.	14	.	145 <i>Greek Silver</i> . Old Tetradrachm of Athens; Didrachm of Thurium; Alexander III, and others	12	Webster

BRONZE MEDALS.

.	15	.	146 Oliver Cromwell, front face, oval; and the one by Dassier, damasked in gold, <i>fine</i>	2	Whelan
.	11	.	147 Mary I, her Bust, to the right, & Peace setting fire to a pile of arms; Charles I. on his Martyrdom; and five of Queen Anne, <i>by Croker</i>	7	Curt

<i>Cureton</i>	148	Julius III, ANGLIA. RESVRGES., <i>modern die</i> ; Charles I. on his Martyrdom; Charles II, FAVENTE. DEO.; George I, R Naval Column	4	"	15	"
<i>Whelan</i>	149	Lord Nelson, R Battle of Trafalgar; Sir Sidney Smith, R COEUR. DE LION.; Wellington, R VOTA. PUBLICA., <i>fine</i>	3	"	5	"
<i>Webster</i>	150	Sir Walter Scott, <i>by W. Wyon</i> ; Lord Byron, on his Death at Missolonghi, <i>fine</i>	2	"	5	"
<i>Do</i>	151	George III, on his Death; George IV, Coronation; William and Adelaide, Coronation; and Mudie's Medal on the Battle of Toulouse, <i>fine</i>	4	"	8	"
<i>Do</i>	152	Wellington, on the Passage of the Douro, and the Battle of Talavera; on England giving a Constitution to the Ionian Isles; Capt. Cook, Royal Society Medal; Princess Charlotte, on her Death, <i>fine</i>	5	"	10	"
<i>Whelan</i>	153	Capt. Cook, Royal Society Medal, <i>plated</i> ; Shakspear; Charles I.; George Prince of Wales, on his Marriage; George IV, on his Visit to Ireland	5	"	5	"
<i>Drummond</i>	154	Lord Nelson, on the Battle of the Nile; Sir Isaac Newton, <i>by Croker</i> ; the Dublin Literary Society, and a Polish Medal	4	"	6	"
<i>Danby</i>	155	Queen Victoria, on her Visit to Guildhall, <i>by W. Wyon, very fine, in case</i>	1	"	18	"
<i>Cureton</i>	156	James II, R an Oak broken down, and a young Orange Tree flourishing by its side; Charles Prince of Wales, R AMOR. ET. SPES.; Charles III, R Louisa; and two others	5	"	7	"
<i>Danby</i>	157	Clementina, R FORTVNAM. CAVSAMQVE. SEQVOR.; James III, and Clementina; James II, and Mary; Benedict XIV, R Monument to the memory of Clementina; and two others	6	"	10	"
<i>Do</i>	158	Early Papal Medals, <i>mostly casts</i>	19	"	1	"
<i>Curt</i>	159	<i>Papal Medals.</i> Clement X, Innocent XII, Paul II, Clement X, Benedict XIII, and XIV, Clement XIV, and others	12	"	1	"
<i>Cureton</i>	160	<i>French.</i> Henry II, R Katharina de Medicis, 1555; Louis XII, Duke of Milan; Charles XI, R Hercules destroying the Hydra, 1572, <i>fine</i>	3	"	13	"
<i>Nightingale</i>	161	Francis II, as King of Scotland; Louis XIII, R his Queen; Henry III, R Equestrian Figure; Henry IV, R Foundry; Charles X, R Regalia, <i>fine</i>	5	"	2	"
<i>Lindal</i>	162	Francis I, Henry II, Henry IV, and Louis XVIII, and others	6	"	10	"
<i>Do</i>	163	Louis XIV, R his Queen; Louis XV, on his Coronation; Louis XIV, R his Queen; Louis XVIII, R Duke de Angouleme, &c.	5	"	5	"

"	7	"	164 Ariosto; Raphael; Louis Philip, on the Reduction of Antwerp, and placing Napoleon's Statue on the Column, <i>fine</i>	4	Whelan
"	5	"	165 Louis XIV, 2, one damasked; Louis XVI, his Queen, and Princess Elizabeth; Charles X, on his Coronation, and two small	6	Cut
"	5	"	166 Henry IV, surrounded by Louis XVI, XVII, Duke de Berry; M. Antoinette, Princess Elizabeth, and Duke d'Enghien; Louis XVII; and Scipio Maffeo	3	Q°
"	6	"	167 Duke of Bordeaux; Simon Bolivar, the Liberator of Columbia; and another, <i>fine</i>	3	Q°
"	13	"	168 Napoleon, R Crossing the Rhine; R Conquest of Egypt; R Marriage; R The Senate and the People, &c.	5	Whelan
"	10	"	169 Napoleon. Confederation of the Rhine; Battle of Jena; Peace of Vienna; Return to Frejus; and one <i>by Manfredini, fine</i>	5	Pindat
"	12	"	170 Napoleon. Battle of Lutzen; Passage of the Danube; Simplon; Camp of Boulogne; and one <i>by Manfredini, fine</i>	5	Q°
"	11	"	171 Napoleon, R the three Fates; Napoleon II, R letters, Coronation at Milan	3	Q°
"	3	"	172 Cisalpine Republic, 2; Vindobona Capta, <i>fine</i>	3	Q°

ENGLISH SILVER.

1	19	"	173 Commonwealth, Crown, 1656; Half Crown, 1653; Shilling, 2; Sixpence; Twopence, 2; Penny, and Halfpenny	9	Saylor
4	10	"	174 Oliver Crown, 1658, <i>very fine and rare, from Strawberry Hill</i>	1	Q°
1	17	"	174* Oliver, Shilling, 1658, <i>very fine, from ditto</i>	1	Q°
3	9	"	175 Oliver, Crown, 1658; Half Crown, 1658; Shilling, 1658	3	Custom
"	19	"	176 Charles II, from the Crown to the Penny	8	Saylor
"	13	"	177 Charles II, Half Crown, hammered money, 1; Shillings, 3; Sixpence; Fourpences, 2; Threepences, 2; Twopences, 2; Pennies, 2	13	Whelan
"	13	"	177* Charles II, Half Crowns, first coinage, with and without the numerals	2	Custom
"	14	"	178 James II, Crown, 1; Half Crown; Shillings, 2; Fourpences, 2; Twopence, and Penny	8	Whelan
"	15	"	179 Charles II, Shilling, large head; James II, Sixpence, <i>fine</i>	2	Custom
1	11	"	179* Charles II, Shillings, 2, one with Elephant under the bust, the other with Feathers; Pattern, Rose crowned, R Thistle; Charles I, Penny, R Plume of Feathers, <i>both rare</i>	4	Bergne
"	16	"	180 William and Mary, Crown, Half Crown, Shilling, Sixpences, 2, Fourpence, Threepence, Twopence, and Penny	9	Saylor

<i>Whelan</i>	181	William III, Crown, Half Crown, Shilling, Sixpence, Threepence, Twopence, Penny; and William and Mary, Half Crown	8	"	16	"
<i>Cunton</i>	182	Anne, Crown; Half Crown; Shillings, 2; Sixpences, 2; Fourpence, Threepence, Twopence, and Penny	10	/	4	"
<i>Findal</i>	183	George I, Crown, Half Crown, Shilling, Fourpence, Threepence, Twopence, and Penny	7	/	1	"
<i>Taylor</i>	184	George II, Crown, LIMA.; Half Crown, Shilling, Sixpence, Fourpence, Threepence, Twopence, and Penny	8	"	14	"
<i>Whelan</i>	185	George II, Crown, young head; Half Crowns, 2; Shilling, and Sixpence	5	"	16	"
<i>Taylor</i>	186	George III, Crown; Shillings, 1763, and 2 others; Sixpence; Fourpence; Threepence; Twopence; Pennies, 2	10	"	13	"
<i>Creton</i>	187	George III, Bank Tokens, Three Shillings, and Eighteen pence; Dollar, and Half Dollar, countermarked; Irish Tokens, Six Shillings, Tenpences, 2, and Ninepence	8	"	17	"
<i>Taylor</i>	188	George IV, Crown, Half Crown, Shilling, and Sixpence, <i>proofs</i> ; Fourpence, Threepence, Twopence, and Penny	8	/	16	"
<i>Webster</i>	189	George III, Crown; George IV, Crown; William IV, Threepences, 2, Twopences, 2; Pennies, 2; Three Halfpence, 1; Victoria, Fourpence, Threepence, Twopence, and Penny	13	"	16	"
<i>Burton</i>	190	<i>Patterns.</i> Charles II, for a Halfpenny, and Farthing; Anne, Farthing; George I, Halfpenny	4	"	18	"
<i>Findal</i>	191	<i>Casts.</i> Richard II, Groat; Henry VIII, Crown; Charles I, Twenty Shillings, and a Pattern	4	"	19	"
<i>Do</i>	191*	Henry VII, Shilling, a fine chasing	1	"	12	"
	192	English and Irish Copper, &c.	79			
<i>Findal</i>	193	Anne, Farthing, 1714; and a Rupee of William IV.	2	"	13	"
<i>Cunton</i>	194	<i>Gold.</i> Charles I, Twenty Shilling Piece, <i>m. m.</i> bell	1	/	2	"

SCOTCH COINS, *Silver.*

<i>Cunton</i>	195	Alexander I, IOICO. ON. PER.; WILL. ON. BER.; ALEX. ON EDE.; and another	4	2	11	"
<i>Do</i>	196	David I, his Head, to the right, with the sceptre, R cross crosslet, DAVIT. RE., <i>very rare</i>	4	3	1	"
<i>Webster</i>	197	William I, <i>with different reverses</i>	4	"	10	"
<i>Cunton</i>	198	William I, <i>with different reverses</i>	4	"	13	"
<i>Do</i>	199	Alexander II, his Head to the left, in front, a sceptre, R double Cross with stars, IO. ON. PER.	2	"	8	"

1	3	"	200	Alexander III, Pennies, 8; Halfpence, 2	10	Cant
"	18	"	200*	Alexander III, Farthing, <i>well preserved and extremely rare</i>	1	Cureton
"	17	"	201	John Baliol, Pennies, 3; Halfpenny, 1, <i>rare</i> ; Robert I, Penny, and Halfpenny, <i>rare</i>	6	Cant
"	18	"	202	Robert I, Penny; David II, Penny; Robert II; Half Groat; Robert III, Groats, 2; James I, Half Groats, 2	7	Cant
"	17	"	203	David II, Groats, 2; Half Groats, 4; Penny, 1; Robert II, Groats, 3	10	Whelan
1	3	"	204	Robert II, Groat, struck at Dundee, <i>probably unique, fine</i>	1	Cant
2	3	"	205	Robert II, Halfpenny, reads RVBERTVS., struck at Roxburgh, <i>unique with this reading</i>	1	Cureton
1	11	"	206	Robert III, Groats, 4; Half Groats, 2; James II, Groat; James III, Half Groat; James V, Groats, 3	11	Whelan
"	12	"	206*	Robert III, Penny, <i>very rare</i>	1	Cureton
1	14	"	207	Robert III, Groat; James II, Groat; Half Groats, 2; Halfpenny, 1, <i>very rare</i> ; Billon, 1	6	Do
1	11	"	207*	James III, Groat and Halfpenny; James IV, Groats, 2; Half Groats, 2; James V, Half Groat, 1; Billon, 1	8	Do
"	10	"	208	Mary, Pattern for a Testoon, <i>Snelling</i> , pl. 3, No. 1, <i>poor, but very rare</i>	1	Nightingale
"	12	"	209	Francis and Mary, Ryal, countermarked with a crowned thistle, 1566, <i>Sn.</i> pl. 3, No. 17, <i>fine</i>	1	Cureton
"	19	"	210	Mary, Ryal, 1567, <i>Sn.</i> pl. 3, No. 20; and a Testoon, pl. 3, No. 4, <i>fine</i>	2	Do
"	18	"	211	Mary, Two-thirds of a Ryal, pl. 3, No. 19; and a Testoon, pl. 3, No. 4	2	Do
1	2	"	212	Mary, Testoons, 2, pl. 3, No. 6; Half Testoon, pl. 3, No. 5; Marriage Medal	4	Do
1	9	"	213	Mary and Henry, One-third of a Ryal, pl. 3, No. 18; Francis and Mary, Testoon, pl. 3, No. 11; Billon, 1; Lion, or Hard Head	4	Do
1	3	"	214	Mary, Half Testoon, pl. 3, No. 3, <i>rare</i> ; Billon, 3	4	Do
2	11	"	214*	Mary, Half Testoon, 1; and Penny, full faced, Billon, <i>rare</i>	2	Do
2	13	"	215	Mary, Testoon, with head, and countermarked with a crowned thistle, pl. 3, No. 13, <i>rare</i>	1	Cant
2	18	"	216	Mary, Half Testoon, with head, countermarked with crowned thistle, pl. 3, No. 12, <i>very rare</i>	1	Taylor
1	3	"	217	James VI, Ryals, dates 1582 and 1583, <i>rare</i> ; and two others	4	Cureton
1	3	"	218	James VI, Ryal, Two-thirds of a Ryal, and One-third of a Ryal, <i>very rare</i>	3	Do

<i>Cusilton</i>	219 James VI, Marks, Half Marks, and others	9	" 11 "
<i>D^o</i>	220 Charles II, Shillings, 2; Sixpence, Threepence, &c.	10	" 19 "
<i>D^o</i>	220* Charles I, Crown and Half Crown, 2; Shillings, 2, <i>in good condition</i> ; James VI, Half Crown	5	1 " "
<i>D^o</i>	221 Charles I, Forty, and two Twenties, <i>one fine and very rare, having c. r. on each side of the thistle</i>	3	2 18 "
<i>Dandy^r</i>	221* James II, Pattern for a Sixty Shilling Piece	1	" 15 "

IRISH COINS, SILVER.

<i>Cusilton</i>	222 John, Penny, ROBERD. ON. DIVE.; Halfpenny, WILLEM. ON. L..., <i>rare</i> ; and a full-faced Penny	3	" 18 "
<i>Hebster</i>	223 John, Penny, ROBERD. ON. DIVE.; Henry III, Penny, RICARD. ON. DIVE.; Edward I, CIVITAS. DVBLINIE.; and Halfpenny, <i>rare</i>	4	" 13 "
<i>Taylor</i>	224 John, Penny, WILLEM. ON. LIME.; Henry III, DAVI. ON. DEVELI.; Edward I, CIVITAS. WATERFOR.; and a Halfpenny	4	" 13 "
<i>Shank</i>	225 Henry III, Pennies, 2, DVBLINE.; Edward I, Pennies, 2, Waterford and Dublin; Edward III, 2, Dublin and Trim	6	1 " "
<i>Cusilton</i>	226 Edward I, Penny, CIVITAS. CORCACIE.; <i>fine, and very rare</i>	1	1 3 "
<i>Laylor</i>	227 Henry VI, Groat; Crown, R CIVITAS. DVBLINE., rose on the centre of the cross, <i>rare</i>	1	" 10 "
<i>Whelan</i>	228 Edward IV, Groat, struck at Waterford; Henry VI, Threepence	2	" 9 "
<i>Cusilton</i>	229 Henry VI, Groat, Dublin; Edward IV, Groat, Waterford, Crown on the O, <i>extremely rare and unpublished</i>	2	5 15 "
<i>Hebster</i>	230 Edward IV, Groat, struck at Drogheda, <i>rare</i> ; and Threepence	2	" 15 "
<i>Cusilton</i>	231 Henry VIII, Groat; Elizabeth, Half Groat, <i>fine</i>	2	1 17 "
<i>Shank</i>	232 Henry VIII, Groats, 5; Elizabeth, Shilling	6	" 9 "
<i>Whelan</i>	233 Philip and Mary, Shilling, 1555; Groat, 1557	2	" 18 "
<i>Enaul</i>	234 James I, Shillings, 2; Groat, 1	3	" 5 "

ANGLO-GALLIC SILVER.

<i>Cusilton</i>	235 Henry II, Aquitaine Penny, <i>Hk. pl. 1, No. 1, rare</i> ; Richard I, Poitou Penny, <i>Hk. pl. 1, No. 1, from the Ainslie collection</i>	1	" 14 "
<i>D^o</i>	236 Richard I, Poitou Penny, <i>Hk. pl. 1, No. 1</i> ; and Aquitaine Halfpenny, <i>Ainslie, pl. 3, No. 6, very rare</i>	2	" 17 "
<i>Whelan</i>	237 Richard I, Poitou Penny, <i>Hk. pl. 1, No. 1</i> ; Edward I, Penny, <i>Ainslie, pl. 3, No. 11</i>	2	" 11 "

" 11	" 238	Richard I, Poitou Penny; Edward I, Penny, same as the last	2	Whelan
/ "	" 239	Edward I, Penny, <i>Ainslie</i> , pl. 3, No. 11; Edward III, Half Groat, <i>Ainslie</i> , pl. 3, No. 22	2	Cunliffe
/ "	" 240	Edward III, Half Groat, <i>Ainslie</i> , pl. 4, No. 27; and a Penny, <i>Ainslie</i> , pl. 3, No. 15	2	Do
/ 5	" 241	Edward III, Penny, <i>Hk.</i> pl. 1, No. 9; Edward the Black Prince, Penny, <i>Ainslie</i> , pl. 5, No. 47	2	Taylor
" 15	" 242	Edward the Black Prince, Half Groat, <i>Ainslie</i> , pl. 4, No. 41; Penny, pl. 5, No. 47	2	Cunliffe
" 15	" 243	Edward the Black Prince, Penny, Aquitaine, <i>Ainslie</i> , pl. 5, No. 48, <i>very fine</i>	1	Do
/ 4	" 244	Edward III, Groat, and Half Groat; Calais, Groat, and Half Groat; Henry IV, V, VI, Groats, 4; Half Groats, 3, <i>some rare</i>	9	Dunlop
" 6	" 245	Henry VI, Gros Blanc, <i>Ainslie</i> , pl. 6, No. 83, <i>m.m. crown, fine</i>	1	Taylor
" 3	" 246	Henry VI, Gros Blanc, <i>Ainslie</i> , pl. 6, No. 83, <i>m.m. fleur-de-lis</i>	1	Cunliffe
" 4	" 247	Henry VI, Gros Blanc, <i>Ainslie</i> , pl. 6, No. 83, <i>m.m. lion</i>	1	Night

ENGLISH AND FOREIGN MEDALS, &c. SILVER.

" 17	" 248	Jettons of Elizabeth, Charles I and Henrietta Maria, Anne, George I, Prince Henry, &c.	8	Curt
/ 0	" 249	Coronation Medals of Charles I and II; William and Mary; Anne; and George I	5	Unders
/ "	" 250	Coronation Medals of George II, III, and IV; Queen Victoria, <i>fine</i>	4	Whelan
/ "	" 251	James I; Charles I; Charles II; James II, & his Queen	6	Unders
" 13	" 252	Oliver Cromwell, the small Dunbar Medal; and Victoria on her visit to Guildhall	2	Taylor
" 11	" 253	James Duke of York, & shipping	1	Cunliffe
" 17	" 254	James II and his Queen, & NAVFRAGA. REPERTA., ship and boats; Oliver Cromwell, a Cast; and Waterloo Medal	3	Dunlop
" 18	" 255	Charles II and his Queen, & globe; Mary, on her death, <i>fine</i>	2	Whelan
" 15	" 256	Anne, & field of battle; & Victory placing an inscribed shield upon a column, <i>fine</i>	2	Tindal
2 4	" 257	Francis and Mary, face to face, above, a crown, & the arms of France and Scotland, crowned, <i>very fine</i>	1	Dunlop
/ 1	" 258	James III, & his Queen; Clementina, & a chariot, <i>both fine</i>	2	Curt
" 16	" 258*	James VIII, Patterns for Guineas	2	Do

<i>Curt</i>	259	James III and Clementina, R female holding a child; Henry IX, R Religion standing, <i>fine and scarce</i>	2	1	14	"
<i>D^o</i>	260	James II, on his coronation; Mary, R female seated on a rock; and three relating to the Pretender	5	1	1	"

SILVER PATTERNS, PROOFS AND COINS.

<i>Auction</i>	261	Pattern for a Crown, <i>by Mills, fine</i>	1	"	11	"
<i>D^o</i>	262	Pattern Crown, George III, <i>by Wyon, fine and rare</i>	1	2	13	"
<i>D^o</i>	263	Pattern Crown, George III, <i>by Wyon, R three Kingdoms personified, fine and rare</i>	1	1	16	"
<i>Doubtless</i>	264	Proof Crown of William IV, 1831, <i>fine</i>	1	2	8	"
	265	Napoleon, Five Francs Pieces, 5, one dated 1815; Two Francs, 16	1	6	1	"
<i>Wafman</i>	266	Napoleon (Joseph), Spanish Dollar, and Sicilian Dollar	2	"	10	"
<i>Burton</i>	267	Napoleon (Giacochino), Five Livre of Sicily	2	"	10	"
<i>Auction</i>	268	Napoleon (Hieronymus), Westphalia Dollar, and Half Dollar	2	"	4	"
<i>D^o</i>	269	Napoleon (Lodeu I), Holland Dollar	1	"		"
<i>Burton</i>	270	Napoleon (Eliza), Lucca Five Franc; Maria Louisa, Five Livre, <i>fine</i>	2	"	11	"
<i>D^o</i>	271	Henry V of France, 1832, Five Franc Piece, <i>rare</i>	1	"	12	"
	272	Napoleon; Birth of the King of Rome; The Senate and the People, placing the Statue on the Column; and two others, <i>one very small</i>	5	"	7	"
<i>Curt</i>	273	James VIII, Crown; Simon Boliver, Dollar; and an oval Medal of Simon Boliver	3	1	6	"
<i>D^o</i>	274	Louis XVI, R Commerce, seated between three river gods; Charles XII, Dollar; and Box made out of Dollars of Leopold Archduke of Austria	3	"	13	"
<i>Auction</i>	275	Russian Dollars, 3; Half Dollar, 1; and two others	6	1	1	"
<i>D^o</i>	276	Charles XI of Sweden, oval Medal; Napoleon, on the death of Desaix; Franc, Half Franc, two Quarter Francs, &c.	8	"	10	"
<i>D^o</i>	277	Miscellaneous Silver Coins, 3 <i>ozs.</i>	1	"	4	"
<i>Doubtless</i>	278	Platina Russian Three Rouble Piece	1	"	10	"
<i>Curt</i>	279	Platina Russian Three Rouble Piece	1	"	8	"
<i>Curt</i>	280	Morocco Case to hold six medals	1	"	3	"
<i>Webster</i>	281	Mahogany Cabinet, forty-four drawers for large brass and one drawer at the bottom	1	3	5	"
<i>D^o</i>	282	Mahogany Cabinet for Medals, with nine large and twelve smaller drawers	1	2	3	"

END OF THE SALE.

£ 154 15 6

190 17 "

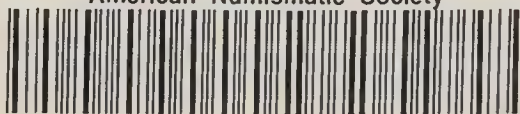
£ 345.12. 6











3 8060 00052 3852

2
1

3
4 3 end

9th Catal. W^m Mark
Consul in Spain. Includes
Catal. o Bount Breva.
post Catalogue

